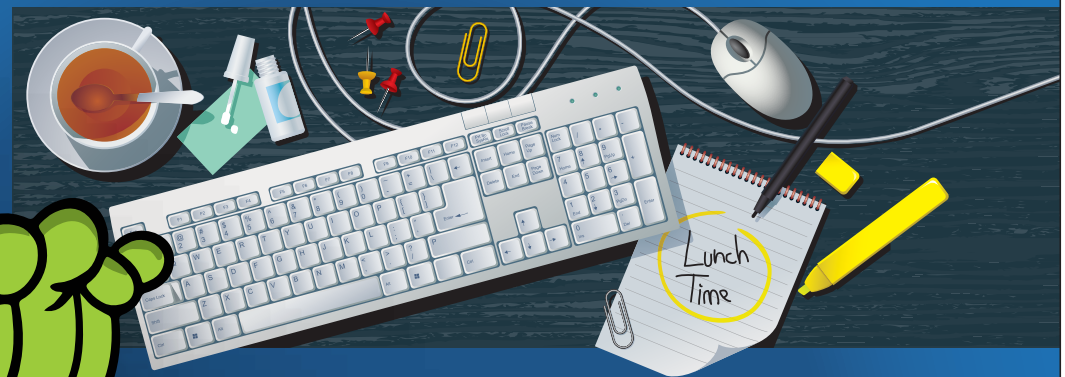




Get the scoop on the **FLU BUG'S** favorite hangouts

Flu viruses live on porous surfaces, like paper, for 8 to 12 hours*



Flu viruses live on nonporous surfaces,
like stainless steel and plastic, for 24 to 48 hours*

Remember to disinfect phones, tablets,
pens, light switches, doorknobs, and more.

To avoid spreading germs on your hands, wash them with
soap and water, and try not to touch your eyes, nose or mouth.

This poster is provided compliments of
Longbotham Strategic Marketing, www.longbotham.com
Resale prohibited. © 2015

*http://www.ncbi.nlm.nih.gov/pubmed/6282993?tool=EntrezSystem2.PEntrez.Pubmed.Pubmed_ResultsPanel.Pubmed_RVDocSum&ordinalpos=1